

Public-law institution jointly founded by the federal states and the Federation

European Technical Assessment Body  
for construction products



## European Technical Assessment

ETA-19/0632  
of 26 September 2024

English translation prepared by DIBt - Original version in German language

### General Part

Technical Assessment Body issuing the European Technical Assessment:

Deutsches Institut für Bautechnik

Trade name of the construction product

Injection System Hilti HIT-HY 200-A V3 and HIT-HY 200-R V3 with HIT-Z / HIT-Z-F / HIT-Z-R and HIT-Z-D TP / HIT-Z-R-D TP

Product family to which the construction product belongs

Bonded fasteners and bonded expansion fasteners for use in concrete

Manufacturer

Hilti Aktiengesellschaft  
Feldkircherstrasse 100  
9494 SCHAAN  
FÜRSTENTUM LIECHTENSTEIN

Manufacturing plant

Hilti Plants

This European Technical Assessment contains

22 pages including 3 annexes which form an integral part of this assessment

This European Technical Assessment is issued in accordance with Regulation (EU) No 305/2011, on the basis of

EAD 330499-02-0601, Edition 12/2023

This version replaces

ETA-19/0632 issued on 8 June 2023

The European Technical Assessment is issued by the Technical Assessment Body in its official language. Translations of this European Technical Assessment in other languages shall fully correspond to the original issued document and shall be identified as such.

Communication of this European Technical Assessment, including transmission by electronic means, shall be in full. However, partial reproduction may only be made with the written consent of the issuing Technical Assessment Body. Any partial reproduction shall be identified as such.

This European Technical Assessment may be withdrawn by the issuing Technical Assessment Body, in particular pursuant to information by the Commission in accordance with Article 25(3) of Regulation (EU) No 305/2011.

## Specific Part

### 1 Technical description of the product

The Injection System Hilti HIT-HY 200-A V3 and HIT-HY 200-R V3 with HIT-Z / HIT-Z-F / HIT-Z-R and HIT-Z-D TP / HIT-Z-R-D TP is a bonded expansion fastener consisting of a foil pack with injection mortar Hilti HIT-HY 200-A V3 or HIT-HY 200-R V3 and an anchor rod (including nut and washer or Hilti Filling Set with calotte nut or nut) according to Annex A2 and A3.

The anchor rod is placed into a drill hole filled with injection mortar. The load transfer is realised by mechanical interlock of several cones in the bonding mortar and then via a combination of bonding and friction forces in the base material (concrete).

The product description is given in Annex A.

### 2 Specification of the intended use in accordance with the applicable European Assessment Document

The performances given in Section 3 are only valid if the anchor is used in compliance with the specifications and conditions given in Annex B.

The verifications and assessment methods on which this European Technical Assessment is based lead to the assumption of a working life of the anchor of at least 50 and/or 100 years. The indications given on the working life cannot be interpreted as a guarantee given by the producer, but are to be regarded only as a means for choosing the right products in relation to the expected economically reasonable working life of the works.

### 3 Performance of the product and references to the methods used for its assessment

#### 3.1 Mechanical resistance and stability (BWR 1)

Essential characteristic	Performance
Characteristic resistance to tension load (static and quasi-static loading)	See Annex C1, B2 – B3
Characteristic resistance to shear load (static and quasi-static loading)	See Annex C2
Displacements under short-term and long-term loading	See Annex C3
Characteristic resistance and displacements for seismic performance categories C1 and C2	See Annex C4 – C6

#### 3.2 Safety in case of fire (BWR 2)

Essential characteristic	Performance
Reaction to fire	Class A1
Resistance to fire	No performance assessed

#### 3.3 Hygiene, health and the environment (BWR 3)

Essential characteristic	Performance
Content, emission and/or release of dangerous substances	No performance assessed

**4 Assessment and verification of constancy of performance (AVCP) system applied, with reference to its legal base**

In accordance with EAD 330499-02-0601 the applicable European legal act is: [96/582/EC]

The system to be applied is: 1

**5 Technical details necessary for the implementation of the AVCP system, as provided for in the applicable European Assessment Document**

Technical details necessary for the implementation of the AVCP system are laid down in the control plan deposited at Deutsches Institut für Bautechnik.

The following standards and documents are referred to in this European Technical Assessment:

- EN ISO 19598:2016                      Metallic coatings - Electroplated coatings of zinc and zinc alloys on iron or steel with supplementary Cr(VI)-free treatment (ISO 19598:2016)
- EN 1992-4:2018                        Eurocode 2: Design of concrete structures - Part 4: Design of fastenings for use in concrete
- EN 1993-1-4:2006 + A1:2015        Eurocode 3: Design of steel structures - Part 1-4: General rules - Supplementary rules for stainless steels
- EN 10088-1:2014                        Stainless steels - Part 1: List of stainless steels
- EN 206:2013 + A1:2016                Concrete - Specification, performance, production and conformity
- EOTA TR 055                             Design of fastenings based on EAD 330232-00-0601, EAD 330499-00-0601 and EAD 330747-00-0601, February 2018

Issued in Berlin on 26 September 2024 by Deutsches Institut für Bautechnik

Beatrix Wittstock  
Head of Section

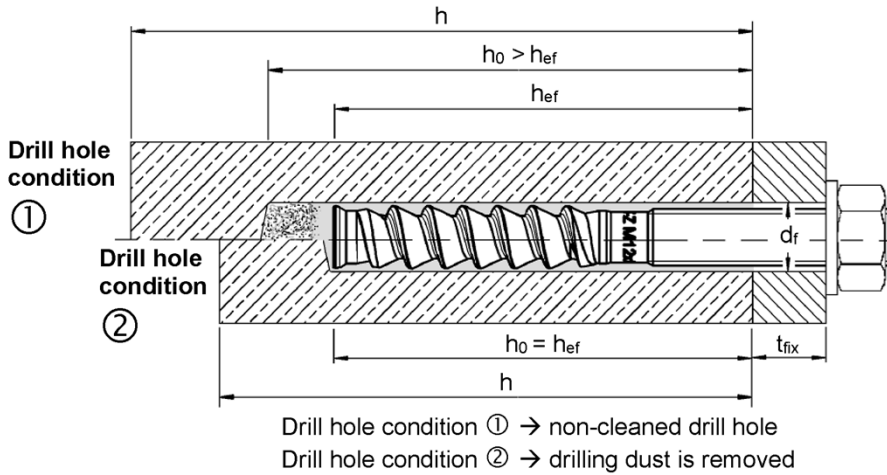
*beglaubigt:*  
Stiller

## Installed condition

**Figure A1: HIT-Z, HIT-Z-F, HIT-Z-R**

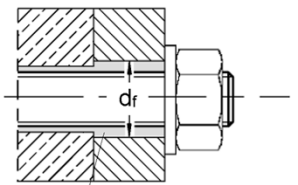
### Pre-setting:

Install anchor before positioning fixture



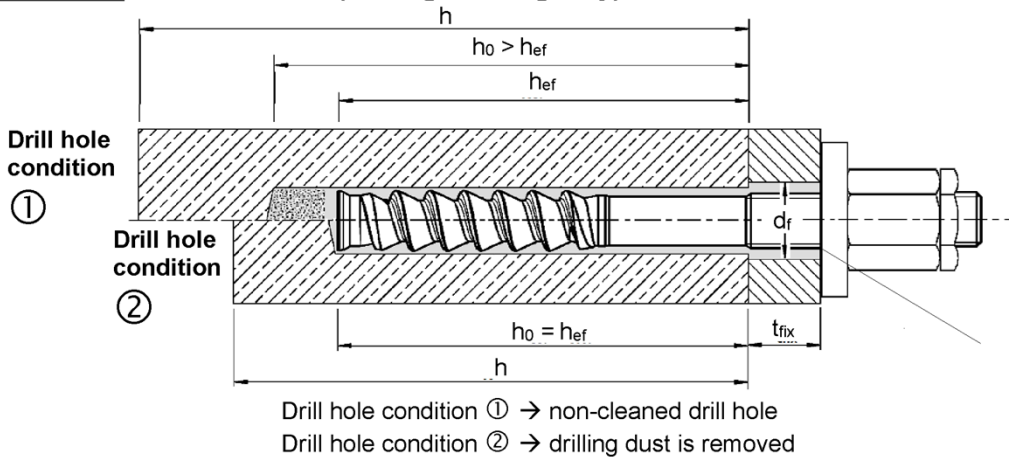
### Through-setting:

Install anchor through positioned fixture



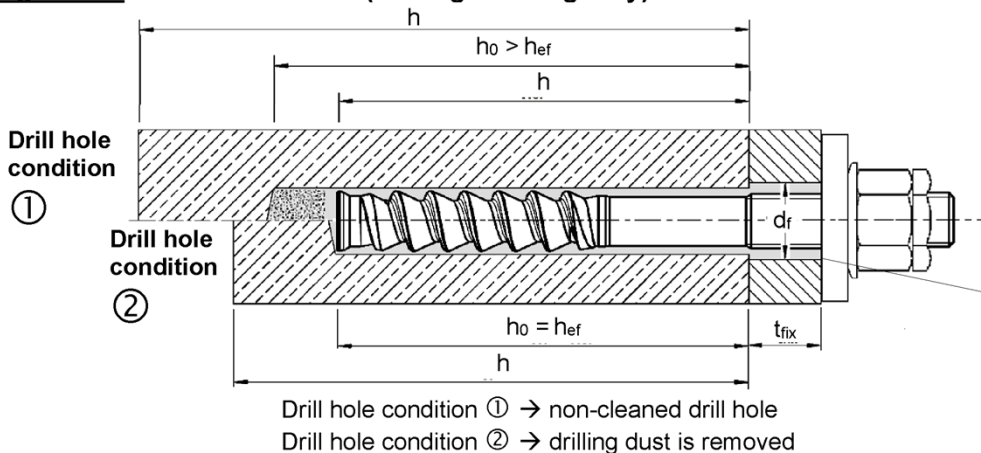
Annular gap filled with Hilti HIT-HY 200-A V3 or HIT-HY 200-R V3

**Figure A2: HIT-Z-D TP M16 (Through-setting only)**



Annular gap filled with Hilti HIT-HY 200-A V3 or HIT-HY 200-R V3

**Figure A3: HIT-Z-R-D TP M16 (Through-setting only)**



Annular gap filled with Hilti HIT-HY 200-A V3 or HIT-HY 200-R V3

Injection system Hilti HIT-HY 200-A V3 and HIT-HY 200-R V3  
with HIT-Z / HIT-Z-F / HIT-Z-R and HIT-Z-D TP / HIT-Z-R-D TP

Product description  
Installed condition

Annex A1

Product description: Injection mortar and steel elements

**Injection mortar Hilti HIT-HY 200-A V3 and HIT-HY 200-R V3:** hybrid system with aggregate 330 ml and 500 ml

Marking:  
HILTI HIT  
HY 200-A V3  
Production time and production line  
Expiry date mm/yyyy



Product name: "Hilti HIT-HY 200-A V3"

Marking:  
HILTI HIT  
HY 200-R V3  
Production time and production line  
Expiry date mm/yyyy



Product name: "Hilti HIT-HY 200-R V3"

**Static mixer Hilti HIT-RE-M**



**Injection system Hilti HIT-HY 200-A V3 and HIT-HY 200-R V3  
with HIT-Z / HIT-Z-F / HIT-Z-R and HIT-Z-D TP / HIT-Z-R-D TP**

**Product description**  
Injection mortar / Static mixer

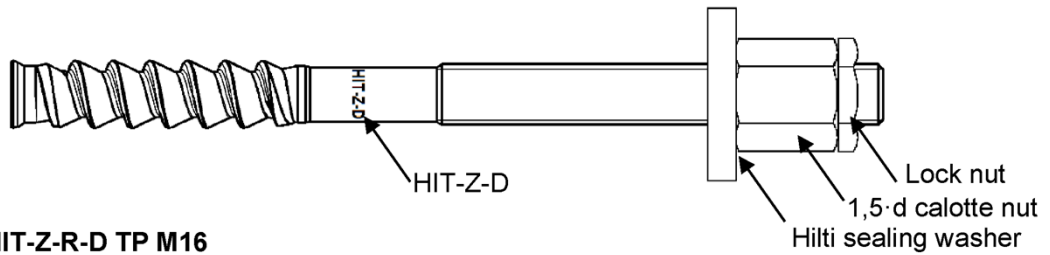
**Annex A2**

**Steel element HIT-Z, HIT-Z-F, HIT-Z-F, HIT-Z-R**

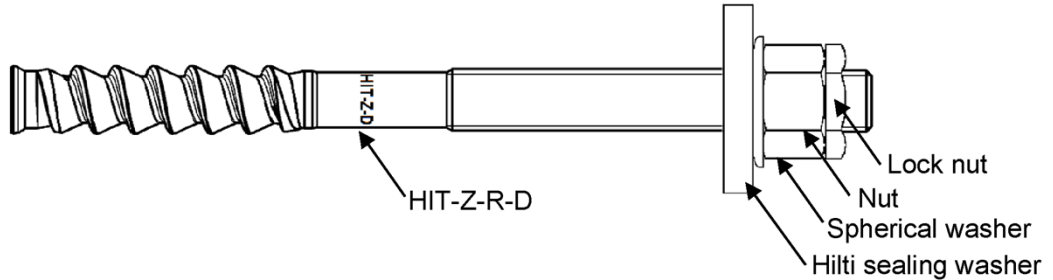


Hilti anchor rod: HIT-Z and HIT-Z-R: M8 to M20  
Hilti anchor rod: HIT-Z-F: M16 and M20

**Steel element HIT-Z-D TP M16**

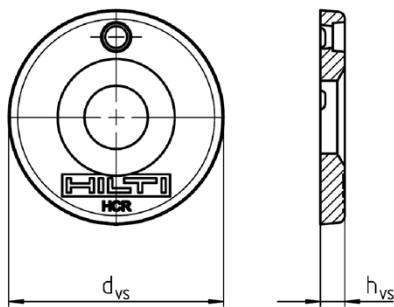


**Steel element HIT-Z-R-D TP M16**

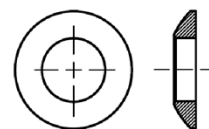


**Hilti Filling Set to fill the annular gap between anchor and fixture**

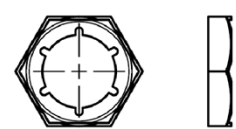
Sealing washer



Spherical washer



Lock nut



**Table A1: Geometry of Hilti filling set**

Hilti Filling Set		M8	M10	M12	M16	M20
Diameter of sealing washer	d <sub>vs</sub> [mm]	38	42	44	52	60
Thickness of sealing washer	h <sub>vs</sub> [mm]	5	5	5	6	6
Thickness of Hilti Filling Set	h <sub>fs</sub> [mm]	8	9	10	11	13

Injection system Hilti HIT-HY 200-A V3 and HIT-HY 200-R V3  
with HIT-Z / HIT-Z-F / HIT-Z-R and HIT-Z-D TP / HIT-Z-R-D TP

**Product description**  
Steel elements / Filling set

**Annex A3**

**Table A2: Materials**

Designation	Material
<b>Metal parts made of zinc coated steel</b>	
Anchor rod HIT-Z and HIT-Z-D TP	For $\leq$ M12: $f_{uk} = 650 \text{ N/mm}^2$ , $f_{yk} = 520 \text{ N/mm}^2$ For M16: $f_{uk} = 610 \text{ N/mm}^2$ , $f_{yk} = 490 \text{ N/mm}^2$ For M20: $f_{uk} = 595 \text{ N/mm}^2$ , $f_{yk} = 480 \text{ N/mm}^2$ Elongation at fracture ( $l_0=5d$ ) > 8% ductile Electroplated zinc coated $\geq 5 \mu\text{m}$
Washer	Electroplated zinc coated $\geq 5 \mu\text{m}$
Nut	Strength class of nut adapted to strength class of anchor rod Electroplated zinc coated $\geq 5 \mu\text{m}$
Calotte nut	Hexagon nut with a height of 1,5 d Electroplated zinc coated $\geq 5 \mu\text{m}$
Lock nut	Electroplated zinc coated $\geq 5 \mu\text{m}$
Hilti Filling Set	Filling washer: Electroplated zinc coated $\geq 5 \mu\text{m}$ Spherical washer: Electroplated zinc coated $\geq 5 \mu\text{m}$ Lock nut: Electroplated zinc coated $\geq 5 \mu\text{m}$
<b>Metal parts made of multilayer coated steel</b>	
Anchor rod HIT-Z-F	For M16: $f_{uk} = 610 \text{ N/mm}^2$ , $f_{yk} = 490 \text{ N/mm}^2$ For M20: $f_{uk} = 595 \text{ N/mm}^2$ , $f_{yk} = 480 \text{ N/mm}^2$ Elongation at fracture ( $l_0=5d$ ) > 8% ductile Multilayer coating, ZnNi-galvanized according to EN ISO 19598
Washer	Multilayer coating, ZnNi-galvanized according to EN ISO 19598
Nut	Multilayer coating, ZnNi-galvanized according to EN ISO 19598
Hilti Filling Set F	Sealing washer: hot dip galvanized $\geq 50 \mu\text{m}$ Spherical washer: hot dip galvanized $\geq 50 \mu\text{m}$ Electroplated zinc-nickel coated $\geq 6 \mu\text{m}$
<b>Metal parts made of stainless steel corrosion resistance class III according EN 1993-1-4</b>	
Anchor rod HIT-Z-R and HIT-Z-R-D TP	For $\leq$ M12: $f_{uk} = 650 \text{ N/mm}^2$ , $f_{yk} = 520 \text{ N/mm}^2$ For M16: $f_{uk} = 610 \text{ N/mm}^2$ , $f_{yk} = 490 \text{ N/mm}^2$ For M20: $f_{uk} = 595 \text{ N/mm}^2$ , $f_{yk} = 480 \text{ N/mm}^2$ Elongation at fracture ( $l_0=5d$ ) > 8% ductile Stainless steel 1.4401, 1.4404 EN 10088-1
Washer	Stainless steel A4 according to EN 10088-1
Spherical washer	Stainless steel according to EN 10088-1
Nut	Strength class of nut adapted to strength class of anchor rod Stainless steel 1.4401, 1.4404 EN 10088-1
Lock nut	Stainless steel according to EN 10088-1
Hilti Filling Set	Sealing washer: stainless steel A4 according to EN 10088-1 Spherical washer: stainless steel A4 according to EN 10088-1 Lock nut: stainless steel A4 according to EN 10088-1

**Injection system Hilti HIT-HY 200-A V3 and HIT-HY 200-R V3  
with HIT-Z / HIT-Z-F / HIT-Z-R and HIT-Z-D TP / HIT-Z-R-D TP**

**Product description**  
Materials

**Annex A4**



## Specifications of intended use

### Anchorage subject to:

- Static and quasi-static loading
  - HIT-Z and HIT-Z-R size M8 to M20. HIT-Z-F size M16 and M20, HIT-Z-D TP and HIT-Z-R-D TP size M16
- Seismic performance category:
  - Seismic C1: HIT-Z, HIT-Z-R sizes M8 to M20, HIT-Z-F sizes M16 and M20, HIT-Z-D TP and HIT-Z-R-D TP size M16 in hammer drilled holes.
  - Seismic C2: HIT-Z, HIT-Z-R sizes M12 to M20, HIT-Z-F sizes M16 and M20, HIT-Z-D TP and HIT-Z-R-D TP size M16 in hammer drilled holes.

### Base material:

- Reinforced or unreinforced normal weight concrete without fibres according to EN 206.
- Strength classes C20/25 to C50/60 according to EN 206.
- Cracked and uncracked concrete.

### Temperature in the base material:

- at installation  
+5 °C to +40 °C
- in-service
  - Temperature range I: -40 °C to +40 °C  
(max. long term temperature +24 °C and max. short term temperature +40 °C)
  - Temperature range II: -40 °C to +80 °C  
(max. long term temperature +50 °C and max. short term temperature +80 °C)
  - Temperature range III: -40 °C to +120 °C  
(max. long term temperature +72 °C and max. short term temperature +120 °C)

### Use conditions (Environmental conditions):

- Structures subject to dry internal conditions (all materials).
- For all other conditions according to EN 1993-1-4 corresponding to corrosion resistance class Table A2 Annex A3. (stainless steels).

### Design:

- Fastenings are designed under the responsibility of an engineer experienced in fastenings and concrete work.
- Verifiable calculation notes and drawings are prepared taking account of the loads to be anchored. The position of the anchor is indicated on the design drawings (e. g. position of the fastener relative to reinforcement or to supports, etc.).
- The anchorages are designed in accordance with EN 1992-4 and EOTA Technical Report TR 055.

### Installation:

- Concrete condition I1:  
Installation in dry or wet (water saturated) concrete and use in service in dry or wet concrete
- Installation direction D3:  
Downward and horizontal and upward (e.g. overhead).
- Drilling technique: hammer drilling, diamond coring or hammer drilling with hollow drill bit TE-CD, TE-YD
- Anchor installation carried out by appropriately qualified personnel and under the supervision of the person responsible for technical matters of the site.

Injection system Hilti HIT-HY 200-A V3 and HIT-HY 200-R V3  
with HIT-Z / HIT-Z-F / HIT-Z-R and HIT-Z-D TP / HIT-Z-R-D TP


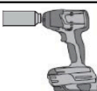
Intended Use  
Specifications

Annex B1

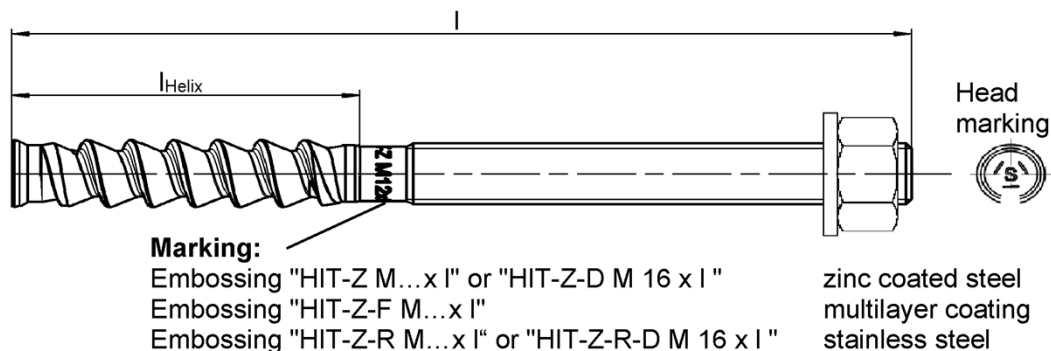
**Table B1: Installation parameters HIT-Z, HIT-Z-F, HIT-Z-R and HIT-Z(-R)-D TP**

		M8	M10	M12	M16	M20
Nominal diameter	d [mm]	8	10	12	16	20
Nominal diameter of drill bit	d <sub>0</sub> [mm]	10	12	14	18	22
Length of anchor	min l [mm]	80	95	105	155	215
	max l [mm]	120	160	196	420	450
Length of helix	l <sub>Helix</sub> [mm]	35 or 50	50 or 60	60	96	100
Nominal anchorage depth	h <sub>ef,min</sub> [mm]	60	60	60	96	100
	h <sub>ef,max</sub> [mm]	100	120	144	192	220
Drill hole condition ① Min. thickness of concrete member	h <sub>min</sub> [mm]	h <sub>ef</sub> + 60 mm			h <sub>ef</sub> + 100 mm	
Drill hole condition ② Min. thickness of concrete member	h <sub>min</sub> [mm]	h <sub>ef</sub> + 30 mm ≥ 100 mm			h <sub>ef</sub> + 45 mm	
Maximum depth of drill hole	h <sub>0</sub> [mm]	h – 30 mm			h – 2 d <sub>0</sub>	
Pre-setting HIT-Z (-F, -R): Maximum diameter of clearance hole in the fixture	d <sub>f</sub> [mm]	9	12	14	18	22
Through-setting: HIT-Z (-F, -D, -R) Maximum diameter of clearance hole in the fixture	d <sub>f</sub> [mm]	11	14	16	20	24
Maximum fixture thickness	t <sub>fix</sub> [mm]	48	87	120	303	326
Maximum fixture thickness with filling set	t <sub>fix</sub> [mm]	41	79	111	292	314
Installation torque moment	HIT-Z, -F, -D T <sub>inst</sub> [Nm]	10	25	40	80	150
	HIT-Z-R, -D T <sub>inst</sub> [Nm]	30	55	75	155	215

**Table B2: Methods for application of torque**

		M8	M10	M12	M16	M20
Torque wrench		✓	✓	✓	✓	✓
Machine torquing with Hilti SIW impact wrench and SI-AT adaptive torque module <sup>1)</sup>	 SIW4 AT	✓	✓	✓	-	-
	SIW6 AT	-	-	✓	✓	✓

<sup>1)</sup> Equivalent combination of Hilti SIW + SI-AT tool, compatible to this anchor type, may be used.



Injection system Hilti HIT-HY 200-A V3 and HIT-HY 200-R V3  
with HIT-Z / HIT-Z-F / HIT-Z-R and HIT-Z-D TP / HIT-Z-R-D TP

Intended Use  
Installation parameters

Annex B2

## Minimum edge distance and spacing

For the calculation of minimum spacing and minimum edge distance of anchors in combination with different embedment depth and thickness of concrete member the following equation shall be fulfilled:

$$A_{i,req} < A_{i,ef}$$

**Table B3: Required area  $A_{i,req}$**

HIT-Z, HIT-Z-F, HIT-Z-R			M8	M10	M12	M16	M20
Cracked concrete	$A_{i,req}$	[mm <sup>2</sup> ]	19200	40800	58800	94700	148000
Non-cracked concrete	$A_{i,req}$	[mm <sup>2</sup> ]	22200	57400	80800	128000	198000

**Table B4: Effective area  $A_{i,ef}$**

Member thickness $h > h_{ef} + 1,5 \cdot c$			
Single anchor and group of anchors with $s > 3 \cdot c$	[mm <sup>2</sup> ]	$A_{i,ef} = (6 \cdot c) \cdot (h_{ef} + 1,5 \cdot c)$	with $c \geq 5 \cdot d$
Group of anchors with $s \leq 3 \cdot c$	[mm <sup>2</sup> ]	$A_{i,ef} = (3 \cdot c + s) \cdot (h_{ef} + 1,5 \cdot c)$	with $c \geq 5 \cdot d$ and $s \geq 5 \cdot d$
Member thickness $h \leq h_{ef} + 1,5 \cdot c$			
Single anchor and group of anchors with $s > 3 \cdot c$	[mm <sup>2</sup> ]	$A_{i,ef} = (6 \cdot c) \cdot h$	with $c \geq 5 \cdot d$
Group of anchors with $s \leq 3 \cdot c$	[mm <sup>2</sup> ]	$A_{i,ef} = (3 \cdot c + s) \cdot h$	with $c \geq 5 \cdot d$ and $s \geq 5 \cdot d$

$c_{min}$  and  $s_{min}$  in 5 mm steps

Injection system Hilti HIT-HY 200-A V3 and HIT-HY 200-R V3  
with HIT-Z / HIT-Z-F / HIT-Z-R and HIT-Z-D TP / HIT-Z-R-D TP

**Intended Use**

Installation parameters: member thickness, spacing and edge distances






**Annex B3**

**Table B5: Maximum working time and minimum curing time**

Temperature in the base material T <sup>1)</sup>	HIT-HY 200-A V3		HIT-HY 200-R V3	
	Maximum working time t <sub>work</sub>	Minimum curing time t <sub>cure</sub>	Maximum working time t <sub>work</sub>	Minimum curing time t <sub>cure</sub>
5 °C	25 min	2 hours	45 min	4 hours
>5 °C to 10 °C	15 min	75 min	30 min	2,5 hours
>10 °C to 20 °C	7 min	45 min	15 min	1,5 hours
>20 °C to 30 °C	4 min	30 min	9 min	1 hours
>30 °C to 40 °C	3 min	30 min	6 min	1 hours

<sup>1)</sup> The minimum foil pack temperature is 0 °C.

**Table B6: Parameters of drilling and setting tools**

Steel element	Drill			Installation
HIT-Z / HIT-Z(-F,-R)	Hammer drilling		Diamond coring	Piston plug
	Drill bit	Hollow drill bit TE-CD, TE-YD <sup>1)</sup>		
				
Size	d <sub>0</sub> [mm]	d <sub>0</sub> [mm]	d <sub>0</sub> [mm]	HIT-SZ
M8	10	10	10	-
M10	12	12	12	12
M12	14	14	14	14
M16	18	18	18	18
M20	22	22	22	22

<sup>1)</sup> With vacuum cleaner Hilti VC 10/20/40 (automatic filter cleaning activated, eco mode off) or a vacuum cleaner providing equivalent cleaning performance in combination with the specified Hilti hollow drill bit TE-CD or TE-YD.

**Injection system Hilti HIT-HY 200-A V3 and HIT-HY 200-R V3  
with HIT-Z / HIT-Z-F / HIT-Z-R and HIT-Z-D TP / HIT-Z-R-D TP**

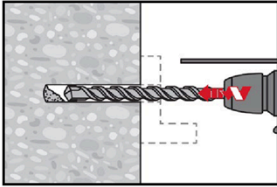
**Intended Use**  
Maximum working time and minimum curing time  
Cleaning and setting tools

**Annex B4**

## Installation instruction

### Hole drilling

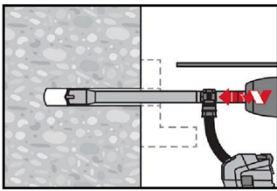
#### a) Hammer drilling



**Through-setting:** Drill hole through the clearance hole in the fixture to the required drilling depth with a hammer drill set in rotation-hammer mode using an appropriately sized carbide drill bit.

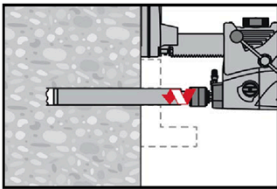
**Pre-setting:** Drill hole to the required drilling depth with a hammer drill set in rotation-hammer mode using an appropriately sized carbide drill bit.  
After drilling is complete, proceed to the "injection preparation" step in the installation instruction.

#### b) Hammer drilling with Hilti hollow drill bit



**Pre- / Through-setting:** Drill hole to the required embedment depth with an appropriately sized Hilti TE-CD or TE-YD hollow drill bit with vacuum attachment following the requirements given in Table B5. This drilling system removes the dust and cleans the drill hole during drilling when used in accordance with the user's manual (see Annex A1 – Drill hole condition ②). After drilling is completed, proceed to the "injection preparation" step in the installation instruction.

#### c) Diamond coring



Diamond coring is permissible when suitable diamond core drilling machines and corresponding core bits are used.

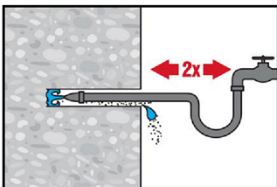
**Through-setting:** Drill hole through the clearance hole in the fixture to the required drilling depth.

**Pre-setting:** Drill hole to the required embedment depth.

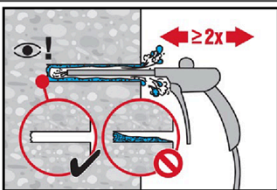
### Drill hole cleaning

#### a) No cleaning required for hammer drilled holes.

#### b) Hole flushing and evacuation required for wet-drilled diamond cored holes.



Flush 2 times from the back of the hole over the whole length until water runs clear. Water-line pressure is sufficient.



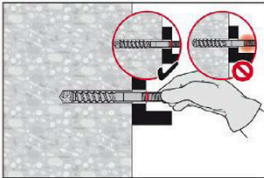
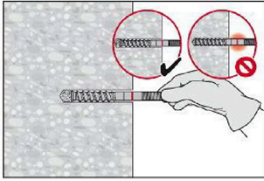
Blow 2 times from the back of the hole (if needed with nozzle extension) with oil-free compressed air (min. 6 bar at 6 m<sup>3</sup>/h) to evacuate the water.

Injection system Hilti HIT-HY 200-A V3 and HIT-HY 200-R V3  
with HIT-Z / HIT-Z-F / HIT-Z-R and HIT-Z-D TP / HIT-Z-R-D TP

Intended Use  
Installation instructions

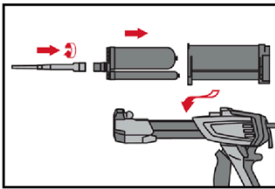
Annex B5

### Checking of setting depth

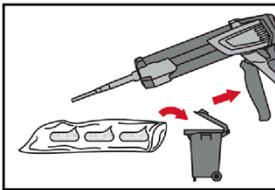


Mark the element and check the setting depth. The element has to fit in the hole until the required embedment depth. If it is not possible to insert the element to the required embedment depth, remove the dust in the drill hole or drill deeper.

### Injection preparation



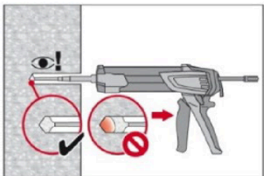
Tightly attach Hilti mixing nozzle HIT-RE-M to foil pack manifold. Do not modify the mixing nozzle.  
Observe the instruction for use of the dispenser.  
Check foil pack holder for proper function. Insert foil pack into foil pack holder and put holder into the dispenser.



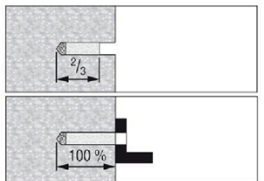
The foil pack opens automatically as dispensing is initiated. Depending on the size of the foil pack an initial amount of adhesive has to be discarded. Discarded quantities are:

2 strokes	for 330 ml foil pack,
3 strokes	for 500 ml foil pack.

### Inject adhesive from the back of the drill hole without forming air voids.

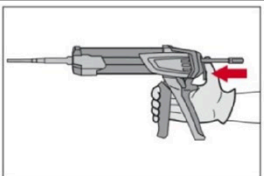


Inject the adhesive starting at the back of the hole, slowly withdrawing the mixer with each trigger pull.



Pre-setting: Fill approximately 2/3 of the drill hole.

Through-setting: Fill 100% of the drill hole



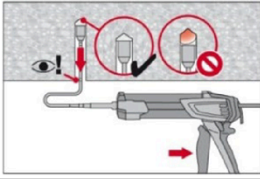
After injection is completed, depressurize the dispenser by pressing the release trigger. This will prevent further adhesive discharge from the mixer.

Injection system Hilti HIT-HY 200-A V3 and HIT-HY 200-R V3  
with HIT-Z / HIT-Z-F / HIT-Z-R and HIT-Z-D TP / HIT-Z-R-D TP

Intended Use  
Installation instructions

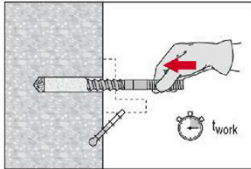
Annex B6

### Overhead installation

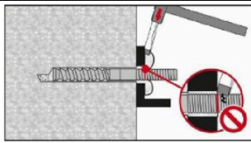


For overhead installation the injection is only possible with the aid of extensions and piston plugs. Assemble HIT-RE-M mixer, extension(s) and appropriately sized piston plug Hilti HIT-SZ (see Table B6). Insert piston plug to back of the hole and inject adhesive. During injection the piston plug will be naturally extruded out of the drill hole by the adhesive pressure.

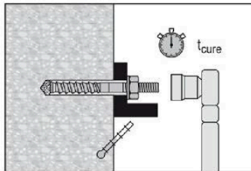
### Setting the element



Before use, verify that the element is dry and free of oil and other contaminants. Set element to the required embedment depth before working time  $t_{work}$  has elapsed. The working time  $t_{work}$  is given in Table B5. After setting the element the annular gap between the anchor and the fixture (through-setting) or concrete (pre-setting) has to be filled with mortar.

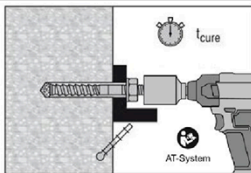


After required curing time  $t_{cure}$  (see Table B5) remove excess mortar. Do not damage thread of element while removing excess mortar for through-setting.



#### a) Torque wrench

The required installation torque  $T_{inst}$  is given in Table B1. The anchor can be loaded.



#### b) Machine torqueing

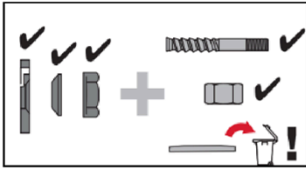
Alternative torqueing is given in Table B2. Read the machine instruction manual from manufacture carefully. The anchor can be loaded.

Injection system Hilti HIT-HY 200-A V3 and HIT-HY 200-R V3  
with HIT-Z / HIT-Z-F / HIT-Z-R and HIT-Z-D TP / HIT-Z-R-D TP

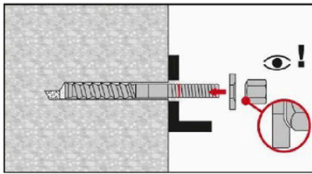
Intended Use  
Installation instructions

Annex B7

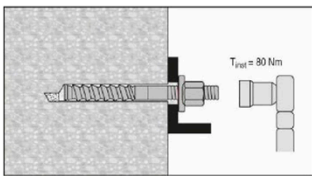
**Installation with Hilti filling set**



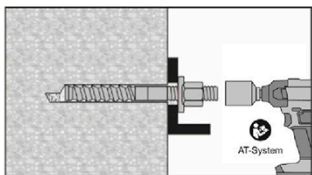
Use Hilti Filling Set with standard nut or for HIT-Z-D TP the 1,5-d calotte nut.



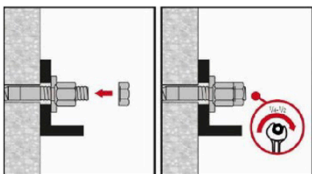
Orient round part of the calotte nut to the sealing washer and install.



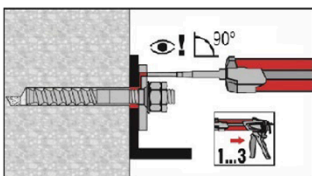
a) Torque wrench  
The applied installation torque shall not exceed the values  $T_{inst}$  given in Table B1.



b) Machine torqueing  
Alternative torqueing is given in Table B2. Read the machine instruction manual from manufacture carefully.



Optional:  
Installation of lock nut. Tighten with a  $\frac{1}{4}$  to  $\frac{1}{2}$  turn.



Fill the annular gap between steel element and fixture with 1-3 strokes of a Hilti injection mortar HIT-HY ... or HIT-RE ... . Follow the installation instructions supplied with the respective Hilti injection mortar.  
After required curing time  $t_{cure}$  the fastening can be loaded.

**Injection system Hilti HIT-HY 200-A V3 and HIT-HY 200-R V3  
with HIT-Z / HIT-Z-F / HIT-Z-R and HIT-Z-D TP / HIT-Z-R-D TP**

**Intended Use**  
Installation instructions

**Annex B8**



**Table C1: Essential characteristics for HIT-Z (-F, -R) and HIT-Z(-R)-D TP, under tension load in case of static and quasi-static loading**

			M8	M10	M12	M16	M20	
Installation safety factor	$\gamma_{inst}$	[-]	1,0					
<b>Steel failure</b>								
HIT-Z, HIT-Z-F, HIT-Z-D TP	$N_{Rk,s}$	[kN]	24	38	55	96	146	
HIT-Z-R, HIT-Z-R-D TP	$N_{Rk,s}$	[kN]	24	38	55	96	146	
<b>Pull-out failure for a working life of 50 and 100 years</b>								
in uncracked concrete								
Temperature range I:	24°C/40°C	$\frac{N_{Rk,p,ucr}}{N_{Rk,p,ucr,100}}$	[kN]	26	44	50	115	150
Temperature range II:	50°C/80°C	$\frac{N_{Rk,p,ucr}}{N_{Rk,p,ucr,100}}$	[kN]	24	40	48	105	135
Temperature range III:	72°C/120°C	$\frac{N_{Rk,p,ucr}}{N_{Rk,p,ucr,100}}$	[kN]	22	36	44	95	125
in cracked concrete								
Temperature range I:	24°C/40°C	$\frac{N_{Rk,p,cr}}{N_{Rk,p,cr,100}}$	[kN]	22	40	48	105	135
Temperature range II:	50°C/80°C	$\frac{N_{Rk,p,cr}}{N_{Rk,p,cr,100}}$	[kN]	20	36	44	95	125
Temperature range III:	72°C/120°C	$\frac{N_{Rk,p,cr}}{N_{Rk,p,cr,100}}$	[kN]	18	32	40	85	110
<b>Concrete cone failure</b>								
Effective embedment depth	$h_{ef,min}$	[mm]	60	60	60	96	100	
	$h_{ef,max}$	[mm]	100	120	144	192	220	
Factor for uncracked concrete	$k_{ucr,N}$	[-]	11,0					
Factor for cracked concrete	$k_{cr,N}$	[-]	7,7					
Edge distance	$c_{cr,N}$	[mm]	$1,5 \cdot h_{ef}$					
Spacing	$s_{cr,N}$	[mm]	$3,0 \cdot h_{ef}$					
<b>Splitting failure</b>								
Edge distance $c_{cr,sp}$ [mm] for	$h / h_{ef} \geq 2,35$			$1,5 \cdot h_{ef}$				
	$2,35 > h / h_{ef} > 1,35$			$6,2 \cdot h_{ef} - 2,0 \cdot h$				
	$h / h_{ef} \leq 1,35$			$3,5 \cdot h_{ef}$				
Spacing	$s_{cr,sp}$	[mm]	$2 \cdot c_{cr,sp}$					

Injection system Hilti HIT-HY 200-A V3 and HIT-HY 200-R V3  
with HIT-Z / HIT-Z-F / HIT-Z-R and HIT-Z-D TP / HIT-Z-R-D TP

**Performances**  
Essential characteristics under tension load in case of static and quasi-static loading

**Annex C1**

**Table C2: Essential characteristics for HIT-Z (-F, -R) and HIT-Z(-R)-D TP under shear load for static and quasi-static loading**

			M8	M10	M12	M16	M20
<b>For a working life of 50 and 100 years</b>							
Installation safety factor	$\gamma_{inst}$	[-]	1,0				
<b>Steel failure without lever arm</b>							
HIT-Z, HIT-Z-F, HIT-Z-D TP	$V^0_{RK,s}$	[kN]	12	19	27	48	73
HIT-Z-R, HIT-Z-R-D TP	$V^0_{RK,s}$	[kN]	14	23	33	57	88
Ductility factor	$k_7$	[-]	1,0				
<b>Steel failure with lever arm</b>							
HIT-Z, HIT-Z-F, HIT-Z-D TP	$M^0_{RK,s}$	[Nm]	24	49	85	203	386
HIT-Z-R, HIT-Z-R-D TP	$M^0_{RK,s}$	[Nm]	24	49	85	203	386
Ductility factor	$k_7$	[-]	1,0				
<b>Concrete pry-out failure</b>							
Pry-out factor	$k_8$	[-]	2,47	2,47	2,92	2,56	2,56
<b>Concrete edge failure</b>							
Effective length of fastener	$l_f$	[mm]	$h_{ef}$				
Outside diameter of fastener	$d_{nom}$	[mm]	8	10	12	16	20

Injection system Hilti HIT-HY 200-A V3 and HIT-HY 200-R V3  
with HIT-Z / HIT-Z-F / HIT-Z-R and HIT-Z-D TP / HIT-Z-R-D TP

**Performances**  
Essential characteristics under shear load in case of static and quasi-static loading

**Annex C2**

**Table C3: Displacements under tension load for HIT-Z (-F, -R) and HIT-Z(-R)-D TP for static and quasi-static loading<sup>1)</sup>**

		M8	M10	M12	M16	M20
Uncracked concrete temperature range I: 24°C / 40°C						
Displacement	$\delta_{N0}$ [mm/kN]	0,03	0,03	0,04	0,05	0,07
	$\delta_{N\infty}$ [mm/kN]	0,06	0,08	0,10	0,13	0,17
Uncracked concrete temperature range II: 50°C / 80°C						
Displacement	$\delta_{N0}$ [mm/kN]	0,03	0,04	0,04	0,06	0,07
	$\delta_{N\infty}$ [mm/kN]	0,07	0,09	0,11	0,15	0,18
Uncracked concrete temperature range III: 72°C / 120°C						
Displacement	$\delta_{N0}$ [mm/kN]	0,03	0,04	0,05	0,06	0,08
	$\delta_{N\infty}$ [mm/kN]	0,07	0,10	0,12	0,16	0,20
Cracked concrete temperature range I: 24°C / 40°C						
Displacement	$\delta_{N0}$ [mm/kN]	0,06	0,07	0,08	0,09	0,10
	$\delta_{N\infty}$ [mm/kN]	0,21	0,21	0,21	0,21	0,21
Cracked concrete temperature range II: 50°C / 80°C						
Displacement	$\delta_{N0}$ [mm/kN]	0,07	0,08	0,08	0,10	0,11
	$\delta_{N\infty}$ [mm/kN]	0,23	0,23	0,23	0,23	0,23
Cracked concrete temperature range III: 72°C / 120°C						
Displacement	$\delta_{N0}$ [mm/kN]	0,07	0,08	0,09	0,11	0,12
	$\delta_{N\infty}$ [mm/kN]	0,25	0,25	0,25	0,25	0,25

<sup>1)</sup> Calculation of the displacement

$$\delta_{N0} = \delta_{N0\text{-factor}} \cdot N; \quad \delta_{N\infty} = \delta_{N\infty\text{-factor}} \cdot N; \quad (N: \text{applied tension load}).$$

**Table C4: Displacements under shear load for HIT-Z (-F, -R) and HIT-Z(-R)-D TP for static and quasi-static loading<sup>1)</sup>**

		M8	M10	M12	M16	M20
Displacement	$\delta_{V0}$ [mm/kN]	0,06	0,06	0,05	0,04	0,04
	$\delta_{V\infty}$ [mm/kN]	0,09	0,08	0,08	0,06	0,06

<sup>1)</sup> Calculation of the displacement

$$\delta_{V0} = \delta_{V0\text{-factor}} \cdot V; \quad \delta_{V\infty} = \delta_{V\infty\text{-factor}} \cdot V; \quad (V: \text{applied shear load})$$

**Injection system Hilti HIT-HY 200-A V3 and HIT-HY 200-R V3 with HIT-Z / HIT-Z-F / HIT-Z-R and HIT-Z-D TP / HIT-Z-R-D TP**

**Performances**  
Displacements in case of static and quasi-static loading

**Annex C3**

**Table C5: Essential characteristics under tension load for HIT-Z (-F, -R) and HIT-Z-(R)-D TP for seismic performance category C1**

			M8	M10	M12	M16	M20	
<b>For a working life of 50 and 100 years</b>								
Installation safety factor	$\gamma_{inst}$	[-]	1,0					
<b>Steel failure</b>								
HIT-Z, HIT-Z-F, HIT-Z-D TP	$N_{Rk,s,C1}$	[kN]	24	38	55	96	146	
HIT-Z-R, HIT-Z-R-D TP	$N_{Rk,s,C1}$	[kN]	24	38	55	96	146	
<b>Pull-out failure</b>								
in cracked concrete C20/25								
Temperature range I:	24°C/40°C	$N_{Rk,p,C1} = N_{Rk,p,100,C1}$	[kN]	22	38	46	100	130
Temperature range II:	50°C/80°C	$N_{Rk,p,C1} = N_{Rk,p,100,C1}$	[kN]	20	34	42	90	115
Temperature range III:	72°C/120°C	$N_{Rk,p,C1} = N_{Rk,p,100,C1}$	[kN]	18	32	38	80	105

**Table C6: Essential characteristics under shear load for HIT-Z (-F, -R) and HIT-Z-(R)-D TP for seismic performance category C1**

			M8	M10	M12	M16	M20
<b>For a working life of 50 and 100 years</b>							
Factor without Hilti filling set	$\alpha_{gap}$	[-]	0,5				
Factor with Hilti filling set	$\alpha_{gap}$	[-]	1,0				
<b>Steel failure</b>							
HIT-Z, HIT-Z-F, HIT-Z-D TP	$V_{Rk,s,C1}$	[kN]	8,5	12	16	28	45
HIT-Z-R, HIT-Z-R-D TP	$V_{Rk,s,C1}$	[kN]	9,8	15	22	31	48

Injection system Hilti HIT-HY 200-A V3 and HIT-HY 200-R V3  
with HIT-Z / HIT-Z-F / HIT-Z-R and HIT-Z-D TP / HIT-Z-R-D TP

**Performances**  
Essential characteristics – seismic performance category C1

**Annex C4**

**Table C7: Essential characteristics for HIT-Z (-F, -R) and HIT-Z(-R)-D TP under tension load for seismic performance category C2**

			M12	M16	M20
<b>For a working life of 50 and 100 years</b>					
Installation safety factor	$\gamma_{inst}$	[-]	1,0		
<b>Steel failure</b>					
HIT-Z, HIT-Z-F, HIT-Z-D TP	$N_{Rk,s,C2}$	[kN]	55	96	146
HIT-Z-R, HIT-Z-R-D TP	$N_{Rk,s,C2}$	[kN]	55	96	146
<b>Pull-out failure</b>					
In cracked concrete C20/25					
Temperature range I:	24°C/40°C	$N_{Rk,p,C2} = N_{Rk,p,100,C2}$ [kN]	22	70	100
Temperature range II:	50°C/80°C	$N_{Rk,p,C2} = N_{Rk,p,100,C2}$ [kN]	19	60	80
Temperature range III:	72°C/120°C	$N_{Rk,p,C2} = N_{Rk,p,100,C2}$ [kN]	16	50	70

**Table C8: Essential characteristics under shear load for HIT-Z (-F, -R) and HIT-Z(-R)-D TP for seismic performance category C2**

			M12	M16	M20
<b>For a working life of 50 and 100 years</b>					
Factor without Hilti filling set	$\alpha_{gap}$	[-]	0,5		
Factor with Hilti filling set	$\alpha_{gap}$	[-]	1,0		
<b>Steel failure</b>					
Installation without Hilti filling set					
Effective embedment depth	$h_{ef}$	[mm]	< 96	< 125	< 150
HIT-Z, HIT-Z-F	$V_{Rk,s,C2}$	[kN]	11	17	35
HIT-Z-R	$V_{Rk,s,C2}$	[kN]	16	21	35
Effective embedment depth	$h_{ef}$	[mm]	≥ 96	≥ 125	≥ 150
HIT-Z <sup>1)</sup> (-F, -R)	$V_{Rk,s,C2}$	[kN]	21	36	55
Installation with Hilti filling set					
Effective embedment depth	$h_{ef}$	[mm]	< 96	< 125	< 150
HIT-Z <sup>1)</sup> (-F, -R)	$V_{Rk,s,C2}$	[kN]	20	34	40
Effective embedment depth	$h_{ef}$	[mm]	≥ 96	≥ 125	≥ 150
HIT-Z <sup>1)</sup> (-F, -D, -R)	$V_{Rk,s,C2}$	[kN]	23	41	61

<sup>1)</sup> These values apply only for steel elements shorter than HIT-Z M16x280 and HIT-Z M20x300.

**Injection system Hilti HIT-HY 200-A V3 and HIT-HY 200-R V3 with HIT-Z / HIT-Z-F / HIT-Z-R and HIT-Z-D TP / HIT-Z-R-D TP**

**Performances**  
Essential characteristics and displacements – seismic performance category C2

**Annex C5**

**Table C9: Displacements under tension load for HIT-Z (-F, -R) and HIT-Z-(R)-D TP for seismic performance category C2**

		M12	M16	M20
Displacement DLS	$\delta_{N,C2(50\%)} [mm]$	1,3	1,9	1,2
Displacement ULS	$\delta_{N,C2(100\%)} [mm]$	3,2	3,6	2,6

**Table C10: Displacements under shear load for HIT-Z (-F, -R) and HIT-Z-(R)-D TP for seismic performance category C2**

		M12	M16	M20
<b>Steel failure</b>				
Installation without Hilti filling set				
Effective embedment depth	$h_{ef} [mm]$	< 96	< 125	< 150
Displacement DLS HIT-Z, HIT-Z-F	$\delta_{V,C2(50\%)} [mm]$	2,8	3,1	4,9
Displacement ULS HIT-Z, HIT-Z-F	$\delta_{V,C2(100\%)} [mm]$	4,6	6,2	6,8
Displacement DLS HIT-Z-R	$\delta_{V,C2(50\%)} [mm]$	3,0	3,1	4,9
Displacement ULS HIT-Z-R	$\delta_{V,C2(100\%)} [mm]$	6,2	6,2	6,8
Effective embedment depth	$h_{ef} [mm]$	$\geq 96$	$\geq 125$	$\geq 150$
Displacement DLS HIT-Z (-F, -R)	$\delta_{V,C2(50\%)} [mm]$	3,4	3,6	4,6
Displacement ULS HIT-Z (-F, -R)	$\delta_{V,C2(100\%)} [mm]$	6,0	5,9	5,8
Installation with Hilti filling set				
Effective embedment depth	$h_{ef} [mm]$	< 96	< 125	< 150
Displacement DLS HIT-Z (-F, -R)	$\delta_{V,C2(50\%)} [mm]$	1,4	1,7	1,8
Displacement ULS HIT-Z (-F, -R)	$\delta_{V,C2(100\%)} [mm]$	4,4	5,1	5,6
Effective embedment depth	$h_{ef} [mm]$	$\geq 96$	$\geq 125$	$\geq 150$
Displacement DLS HIT-Z (-F, -D, -R)	$\delta_{V,C2(50\%)} [mm]$	1,4	1,7	1,8
Displacement ULS HIT-Z (-F, -D, -R)	$\delta_{V,C2(100\%)} [mm]$	5,2	5,1	7,0

Injection system Hilti HIT-HY 200-A V3 and HIT-HY 200-R V3  
with HIT-Z / HIT-Z-F / HIT-Z-R and HIT-Z-D TP / HIT-Z-R-D TP

**Performances**  
Displacements for seismic performance category C2

**Annex C6**